

**CETRA**<sup>2014</sup>

3<sup>rd</sup> International Conference on Road and Rail Infrastructure  
28–30 April 2014, Split, Croatia

## Road and Rail Infrastructure III

Stjepan Lakušić – EDITOR

Organizer  
University of Zagreb  
Faculty of Civil Engineering  
Department of Transportation



**CETRA<sup>2014</sup>**

**3<sup>rd</sup> International Conference on Road and Rail Infrastructure**  
28–30 April 2014, Split, Croatia

TITLE

Road and Rail Infrastructure III, Proceedings of the Conference CETRA 2014

EDITED BY

Stjepan Lakušić

ISSN

1848-9850

PUBLISHED BY

Department of Transportation  
Faculty of Civil Engineering  
University of Zagreb  
Kačićeva 26, 10000 Zagreb, Croatia

DESIGN, LAYOUT & COVER PAGE

minimum d.o.o.  
Marko Uremović · Matej Korlaet

PRINTED IN ZAGREB, CROATIA BY

“Tiskara Zelina”, April 2014

COPIES

400

Zagreb, April 2014.

Although all care was taken to ensure the integrity and quality of the publication and the information herein, no responsibility is assumed by the publisher, the editor and authors for any damages to property or persons as a result of operation or use of this publication or use the information's, instructions or ideas contained in the material herein.

The papers published in the Proceedings express the opinion of the authors, who also are responsible for their content. Reproduction or transmission of full papers is allowed only with written permission of the Publisher. Short parts may be reproduced only with proper quotation of the source.

Proceedings of the  
3<sup>rd</sup> International Conference on Road and Rail Infrastructures – CETRA 2014  
28–30 April 2014, Split, Croatia

# Road and Rail Infrastructure III

**EDITOR**

**Stjepan Lakušić**

Department of Transportation

Faculty of Civil Engineering

University of Zagreb

Zagreb, Croatia

CETRA<sup>2014</sup>

3<sup>rd</sup> International Conference on Road and Rail Infrastructure

28–30 April 2014, Split, Croatia

## ORGANISATION

### CHAIRMEN

Prof. Stjepan Lakušić, University of Zagreb, Faculty of Civil Engineering

Prof. Željko Korlaet, University of Zagreb, Faculty of Civil Engineering

### ORGANIZING COMMITTEE

Prof. Stjepan Lakušić

Prof. Željko Korlaet

Prof. Vesna Dragčević

Prof. Tatjana Rukavina

Assist. Prof. Ivica Stančerić

dr. Maja Ahac

Ivo Haladin

dr. Saša Ahac

Josipa Domitrović

Tamara Džambas

All members of CETRA 2014 Conference Organizing Committee are professors and assistants of the Department of Transportation, Faculty of Civil Engineering at University of Zagreb.

### INTERNATIONAL ACADEMIC SCIENTIFIC COMMITTEE

Prof. Vesna Dragčević, University of Zagreb

Prof. Isfendiyar Egeli, Izmir Institute of Technology

Prof. Rudolf Eger, RheinMain University

Prof. Ešref Gačanin, University of Sarajevo

Prof. Nenad Gucunski, Rutgers University

Prof. Libor Izvolt, University of Zilina

Prof. Lajos Kisgyörgy, Budapest University of Technology and Economics

Prof. Željko Korlaet, University of Zagreb

Prof. Zoran Krakutovski, University of Skopje

Prof. Stjepan Lakušić, University of Zagreb

Prof. Dirk Lauwers, Ghent University

Prof. Zili Li, Delft University of Technology

Prof. Janusz Madejski, Silesian University of Technology

Prof. Goran Mladenović, University of Belgrade

Prof. Otto Plašek, Brno University of Technology

Prof. Vassilios A. Profillidis, Democritus University of Thrace

Prof. Carmen Racanel, Technical University of Civil Engineering Bucharest

Prof. Tatjana Rukavina, University of Zagreb

Prof. Andreas Schoebel, Vienna University of Technology

Prof. Mirjana Tomičić-Torlaković, University of Belgrade

Prof. Audrius Vaitkus, Vilnius Gediminas Technical University

Prof. Nencho Nenov, University of Transport in Sofia

Prof. Marijan Žura, University of Ljubljana



## INFLUENCE OF TIRE PRESSURE ON THE VERTICAL DYNAMIC LOAD APPLIED ON THE PAVEMENT BY A TRUCK'S FRONT SUSPENSION

Pablo Yugo Yoshiura Kubo<sup>1</sup>, Cassio Eduardo Lima de Paiva<sup>1</sup>, Adelino Ferreira<sup>2</sup>

<sup>1</sup> Dept. of Civil Engineering, State University of Campinas (UNICAMP), Brazil

<sup>2</sup> Dept. of Civil Engineering, University of Coimbra, Portugal

### Abstract

The main objective of this research study is to present the results of the influence of tire pressure, from a truck front suspension, on the vertical dynamic load applied on the pavement. For the measurements, it has been used a durability test track located in Brazil. The tire pressure was increased by 10 psi from 90 to 130 psi with a constant load of 6 tons on the front suspension, the maximum allowed load for front axle, according to Brazilian legislation. By applying relative damage concept, it is possible to conclude that the variation on the tire pressure will not affect significantly the load applied on the pavement. Although, it is recommended to repeat the same methodology, in order to analyse the influence on the variation of the other quarter car model variants.

*Keywords: damage, vertical dynamic load, tire*

## 1 Introduction

### 1.1 Background

Vertical dynamic load is directly related to the deterioration of the pavement [1]. Therefore, this relation can also be extended for the vehicles variants, especially for the commercial vehicles – trucks and buses. By analysing the quarter car model (Figure 1) it was expected that the tire spring rate could influence it by changing the tire pressure.

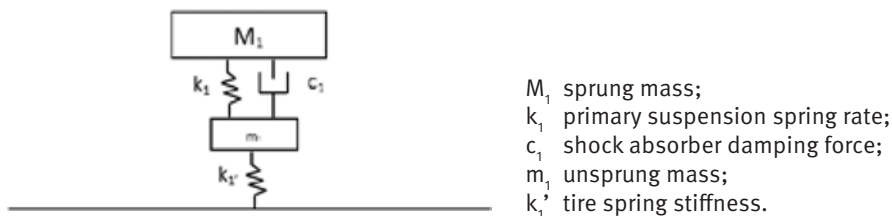


Figure 1 Quarter car model [2]

### 1.2 Scope

The main objective of this research study is to analyse the influence of the tire pressure on the vertical dynamic load applied on the pavement.

### 1.3 Boundaries and assumptions

In order to analyse the influence of the tire pressure, it was necessary to keep constant the other variants of the quarter car model (Figure 1):

- sprung mass and unsprung mass: set as 6 tons, the maximum allowed weight on the front axle according to the Brazilian legislation;
- primary suspension spring rate and shock absorber damping forces: set according to the manufacture specification – new components;
- pavement longitudinal profile: the tests have been performed on a proving ground located in Brazil, in order to keep the same track in all measurements;
- it has been chosen an 8x2 rigid truck (Figure 2) and all measurements reflect the loads of both front steering axles.



Figure 2 Tested truck

## 2 Methodology

### 2.1 Instrumentation and calibration

Uniaxial strain gauges were placed on the main leaf spring of the 1<sup>st</sup> and 2<sup>nd</sup> steering axle (Figure 3) on the left hand side (LHS) and right hand side (RHS) of the vehicle. The recorded values given by the mentioned instrumentation were in  $\mu\epsilon$  (micro-strain). Therefore, it was necessary to calibrate the system in order to estimate the force applied on the pavement. It has been used a weighting scale and applied different loads on the vehicle body with the objective of having the calibration curves between  $\mu\epsilon$  and the load applied on the ground in tons (Figure 4). Due to the fact that all tested springs have the same spring rate, all calibration curves have similar characteristics.



Figure 3 Primary suspension spring leaf instrumentation

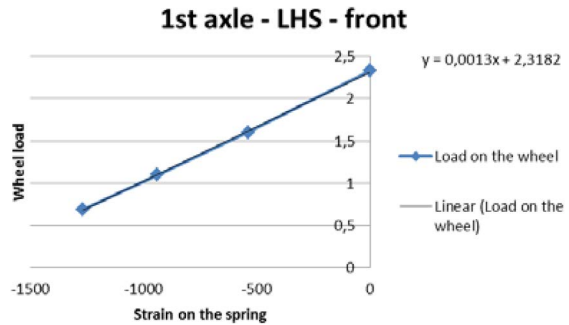


Figure 4 Weighing scale used for the calibration and example of the spring calibration

## 2.2 Test procedure

It has been used a pothole track in the proving ground for the measurements, with the following constant conditions: vehicle weight (6 tons per front axle), vehicle speed (40 km/h), original shock absorber setting and original primary suspension spring rate setting. The only variant was the tire pressure: 90 psi; 100 psi; 110 psi (recommended pressure for the applied vehicle weight [3]); 120 psi; and 130 psi – respectively: 621 kPa, 690 kPa, 758 kPa, 827 kPa and 896 kPa. Tire size: 295/80 R22.5.



Figure 5 Detail of the pothole track

## 3 Results Analysis

### 3.1 Overview

Figure 6 presents an example of the time signal of each front spring for a tire pressure of 110 psi. The mentioned figure refers to the load applied to the pavement on each front axles tires, in tons. By analysing the time signal data, it is not possible to find a conclusion. Therefore, it was necessary to use others statistical analysis.

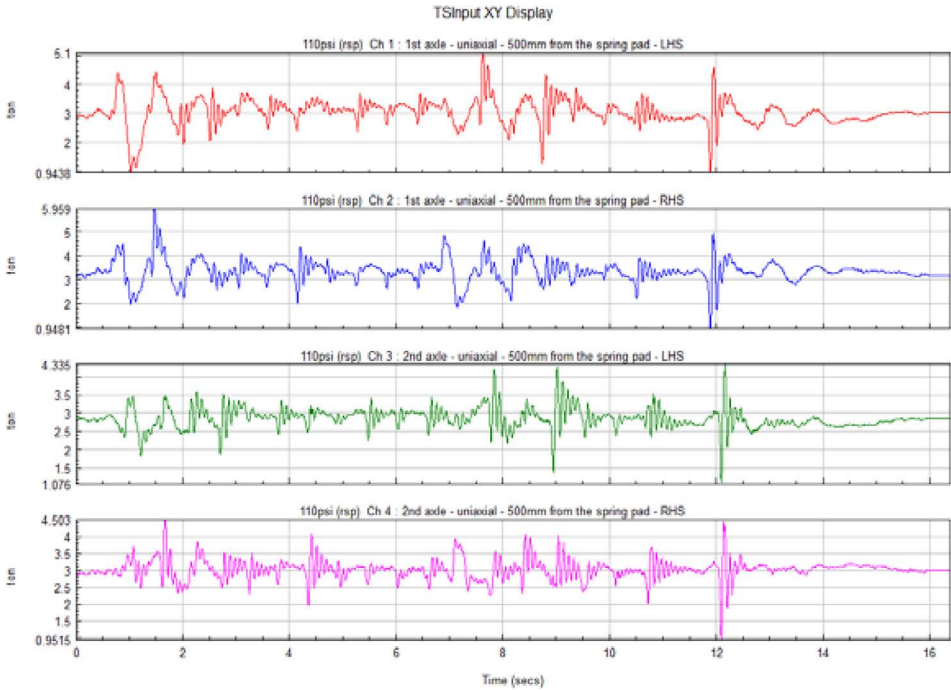


Figure 6 Time signal – load applied on the pavement – 110 psi

### 3.2 Histograms

Figures 7 to 10 present the histograms for the tested tire pressures. It is possible to visualize on these Figures that the counting cycles close to the static load (3 tons) are the mandatory values. Nevertheless, with this statistical tool, it is not possible to analyse the behaviour of the other loads to the pavement.

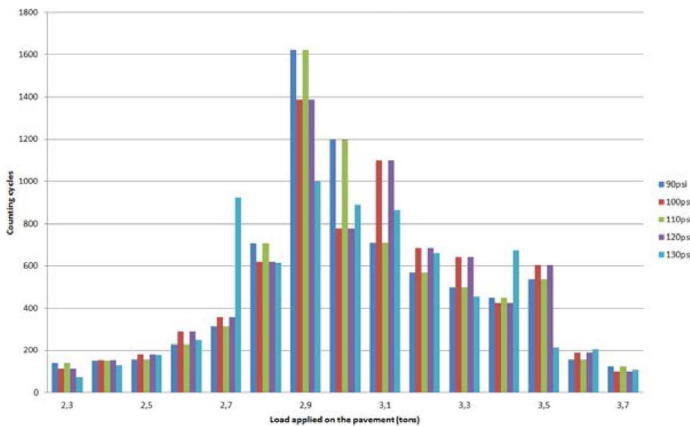


Figure 7 Histogram of the load applied on the pavement – 1<sup>st</sup> axle LHS



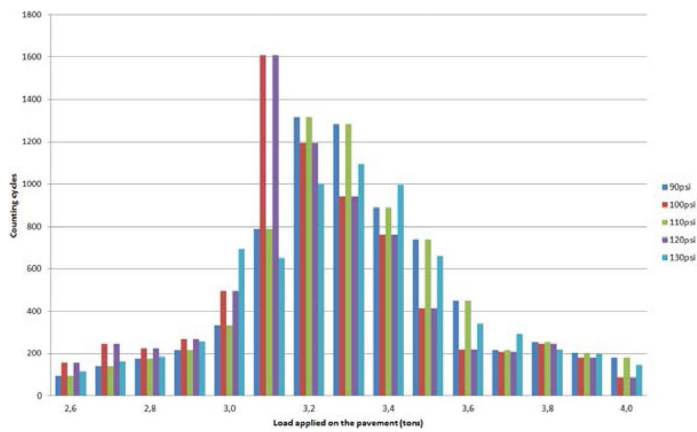


Figure 8 Histogram of the load applied on the pavement – 1<sup>st</sup> axle RHS

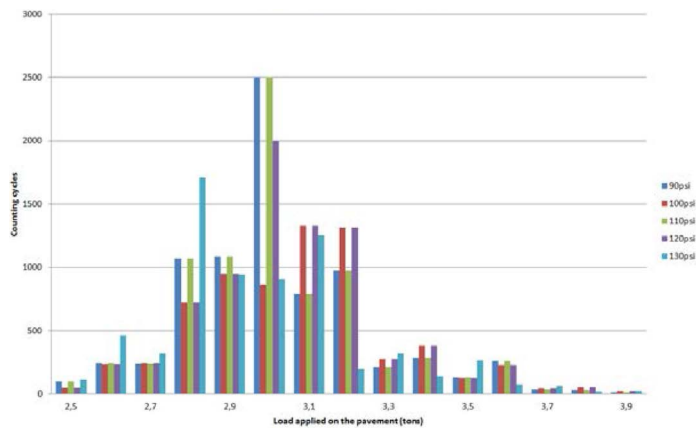


Figure 9 Histogram of the load applied on the pavement – 2<sup>nd</sup> axle LHS

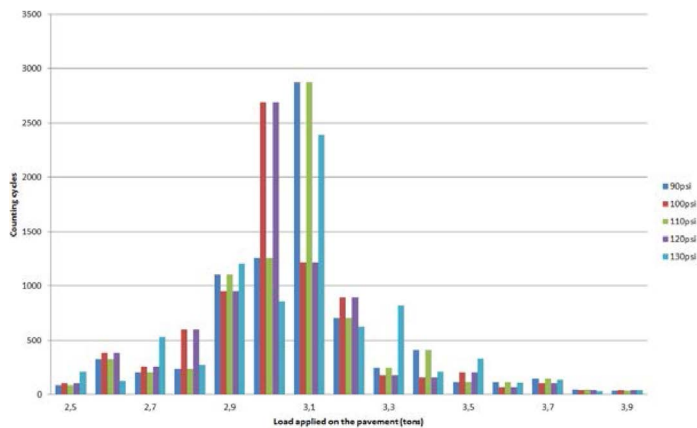


Figure 10 Histogram of the load applied on the pavement – 2<sup>nd</sup> axle RHS

### 3.3 Relative damage calculation

Equivalent constant amplitude stress level is calculated for making life estimates for variable amplitude loading, by using rainflow cycle counting (eqns 1 to 3), which is recommended for highly irregular variation of load with time [4].

$$\sigma_a = \frac{(\sigma_{\max} - \sigma_{\min})}{2} \quad (1)$$

where:

$\sigma_a$  average of each rainflow cycle ( $\sigma_{\max}$ ,  $\sigma_{\min}$ );  
 $\sigma_{\max}$  max stress for each rainflow cycle counting;  
 $\sigma_{\min}$  min stress for each rainflow cycle counting;

$$N_{fi} = \frac{1}{2} \left( \frac{\sqrt{\sigma_{\max} \cdot \sigma_a}}{\sigma'_f} \right)^{\frac{1}{b}} \quad (2)$$

where:

$N_{fi}$  absolute damage of each rainflow cycle counting;  
 $\sigma'_f$  theoretical stress that indicates failure with zero cycles (material property);  
 $b$  slope of the Stress-Life curve (material property).

$$\sum \frac{N_i}{N_{fi}} : \text{absolutedamage} \quad (3)$$

where:

$N_i$  quantity of rainflow cycle counting for each range;

Relative damage will be the ratio between a given tire pressure damage with the baseline (110 psi), Figure 11.

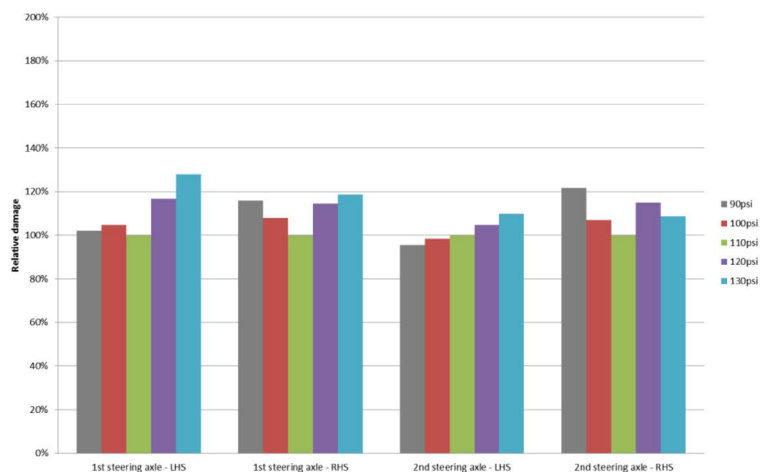


Figure 11 Relative damage among tire pressures, considering  $k=5$

By analysing Figure 11, it is possible to observe that the relative damage, regarding tire pressure, has no significant relation with the vertical load applied on the pavement.

## 4 Conclusion and recommendations

By applying relative damage concept, it is possible to conclude that the variation on the tire pressure will not affect significantly the load applied on the pavement. Although, it is recommended to repeat the same methodology, in order to analyse the influence on the variation of the other quarter car model variants.

### References

- [1] Sayers, M. W.: Gillespie, T. D. & Queiroz, C. A. V.: The International Road Roughness Experiment: establishing correlation and a calibration standard for measurements. Washington D. C: The World Bank, pp. 1-453, 1986.
- [2] Gillespie, T.: Fundamentals of vehicle dynamics. Warrendale: Society of Automotive Engineers, Inc., pp. 1-495, 1992.
- [3] ALAPA. Latin American Association for Tires and Rings. Technical Regulation. São Paulo, pp. 1-351, 2013.
- [4] Dowling, N. E.: Mechanical behaviour of materials: engineering method for deformation, fracture and fatigue. 4. ed. New Jersey: Pearson, pp. 1-936, 2012.